

A vibrant red and orange crab is positioned on dark volcanic sand in the lower-left quadrant. To its right, the large, scaly body and tail of a black iguana are visible, extending towards the top and right edges of the frame. The background is a textured, dark grey volcanic surface.

SILVERSEA®  
EXPEDITIONS

# The Galápagos

VOYAGE COLLECTION 2025/26





**EXPLORE OUR GALÁPAGOS VOYAGES HERE.**

Please turn on your smartphone camera, frame the QR code (left) and tap the link. Some smartphones may require you to download a QR reader app.

A living tapestry of evolution  
where every vista unveils the  
fascinating artistry of nature's  
hand, the Galapagos remain  
a sanctuary of ecological wonders  
found nowhere else on Earth.

Journey with us and be immersed  
in the spellbinding beauty  
of past and present.





# Table of contents

<b>14</b>		<b>34</b>	
<hr/>		<hr/>	
<b>Welcome to the Galápagos</b>		<b>Your intrepid journey awaits</b>	
The Galápagos archipelago	16	<b>36</b>	
Protecting the places we love	18	<hr/>	
Your adventure begins on board	21	<b>The most elegant ship to sail the Galápagos</b>	
Discover the land that time forgot	22	<i>Silver Origin</i>	36
Expeditions with more expertise	24		
Your most all-inclusive expedition experience	26		
<b>28</b>			
<hr/>			
<b>Our voyages</b>			
Northern Galápagos	30		
Western Galápagos	32		

Kicker Rock, Galápagos Islands;  
by Steve McCurry for Silversea











Prickly pear cactus, Galápagos Islands; by Steve McCurry for Silversea





Magnificent Frigatebird,  
Galápagos Islands; by Steve  
McCurry for Silversea



Bartolomé Island, a volcanic islet in the Galápagos Islands

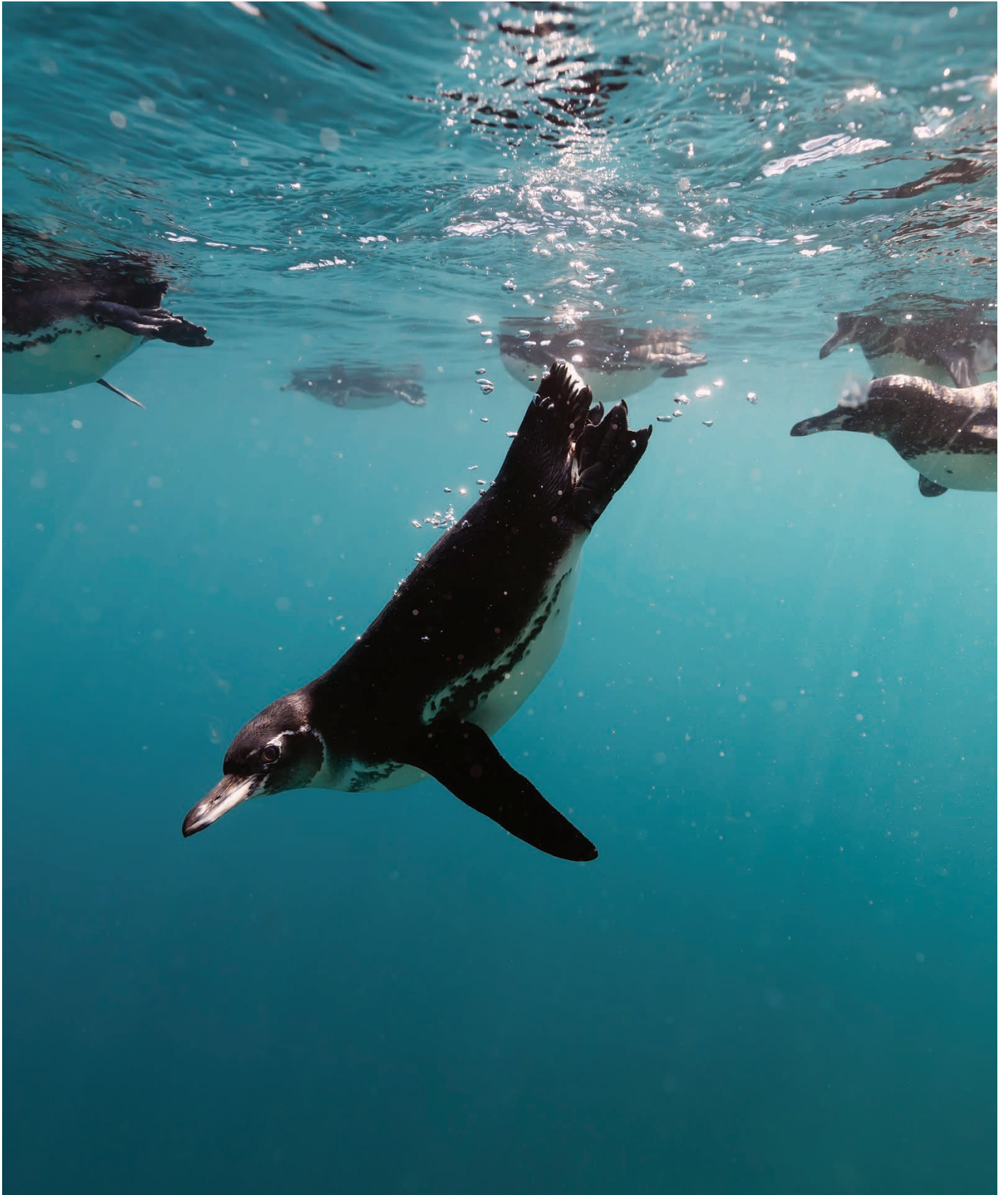








Galápagos penguin;  
Caleta Tagus, Isabela Island,  
Galápagos Islands













*Immerse yourself in the magic and mystery of the Galápagos on board Silver Origin, an intimate ship designed exclusively for these waters. With advanced technology allowing it to manoeuvre to capture wildlife encounters, a dynamic positioning system that protects the delicate seabed, and with more experts per guest than any other line, you'll be part of an authentic expedition to uncover the secrets of this unique living museum.*



# Welcome to the Galápagos

*These islands inspired the work of Charles Darwin and will inspire you to see, and think of, our natural world in a whole new way.*

Undisturbed for millions of years, these extremely remote volcanic lands are home to over 9,000 species of flora and fauna, featuring a wonderful mix of wildlife and scenery found literally nowhere else on the planet. With Silversea you'll visit the most iconic coastlines as well as smaller, more difficult-to-reach areas, as you sail on *Silver Origin*, the most intimate ship in our fleet designed exclusively to explore the Galápagos Islands - with only 100 guests on board.

Offering the highest ratio of Zodiacs per guest in the region and the most Expedition Team members who are also National Park-certified guides, only Silversea can unlock the most personalised expedition experiences across each of these magical islands.





# The Galápagos archipelago

*Biological diversity, evolved over time*



FERNANDINA 248 sq mi



A pristine ecosystem, untouched by outside influence. The famous Flightless Cormorants inhabit this island, as do marine iguanas, pelicans, sea lions and fur seals. The active volcano "La Cumbre" forms the island and different types of lava flows can be compared.

Bolivar canal

This has the highest marine biodiversity of the archipelago. Whales, including Orcas, can be seen here from May to December.

ISABELA 1,790 sq mi



The largest island of the archipelago, Isabela has five active volcanoes, including the imposing Volcán Sierra Negra, the second-largest caldera in the world. Cloud forests harbour giant tortoise sub-species and mangrove lagoons offer views of stingrays.

FLOREANA 67 sq mi



The Galápagos' first human settlement was in Floreana. Post Office Bay is home to a barrel used for letters and news, exchanged between whalers and other boats passing by during 18th and 19th centuries. Flamingos and green sea turtles nest on the island from December to May.

1535 FIRST DISCOVERED

The first recorded visit to the islands happened by chance in 1535, when Fray Tomás de Berlanga, the Bishop of Panamá, was surprised by Peru. The first formal exploration of the islands took place in the 18th century by the Spaniard Malaspina.

1978 WORLD HERITAGE

UNESCO recognised the islands as a World Heritage Site and, in 1985, as a biosphere reserve. This was later extended in December 2001 to include the marine reserve.

13 MAIN ISLANDS + 215 ROCKS & ISLETS

The archipelago is located on the Nazca Plate, a tectonic plate which is moving at a rate of about 2.5 inches (6.4 cm) per year. The first islands to form here were the South Plazas, five million years ago.

## SANTIAGO 226 sq mi



Marine iguanas, sea lions, fur seals, sea turtles, dolphins and sharks are found here. Darwin's Finches and Galápagos Hawks are usually seen, as well as a colony of Galápagos Penguins. You'll find Santiago Island giant tortoises inland.

Marchena

Genovesa

Seymour Norte

Baltra

## SANTA CRUZ 381 sq mi



The Charles Darwin Research Station and the headquarters of the Galápagos National Park Service are located here. This is the native ground of the Galápagos' giant tortoises. Guests will visit The Tortoise Ecological Reserve to interact with tortoises in the wild.

## SAN CRISTÓBAL 215 sq mi



This is the first place in the Galápagos Islands Charles Darwin visited during his voyage on *The Beagle*. This island hosts Frigatebirds, sea lions, giant tortoises, Blue- and Red-footed Boobies, tropicbirds, marine iguanas, dolphins and Swallow-tailed Gulls.

## ESPAÑOLA 23 sq mi



Española is around 3.5 million years old, and is the southernmost island in the group. Española has a large number of endemic species, including the Waved Albatross, Española Mockingbird, Española lava lizard, and marine iguana.

25 THOUSAND POPULATION

The first human settlement dates from 1832.

1,432 PLANT SPECIES

Due to the particular microclimates and geological make-up of the archipelago, the islands are more like a desert than like a rainforest. There are 600 native species of vascular plants, 30 per cent of which are found nowhere else on the planet.

77° SUMMER TEMPERATURES  
Fahrenheit (25° Celsius)

Weather changes as altitude increases in the large islands. Temperature decreases gradually with altitude, while precipitation increases due to the condensation of moisture in clouds on the slopes.



# Protecting the places we love

## *Preserving this natural wonder*

A unique ecological treasure, the Galápagos Islands are famous for a wealth of unique plants and animals found nowhere else on Earth. As conscientious travellers, we have an obligation to explore this intriguing destination responsibly, maintaining its critical role in global biodiversity and safeguarding its fragile ecosystems for future generations.

At Silversea Expeditions, we remain committed to our leadership role in making global discovery as environmentally sound as possible. Our first-ever destination-specific ship, the elegant *Silver Origin*, is designed exclusively for the Galápagos making her home here year-round without ever touching land. State-of-the-art dynamic positioning allows the ship to remain stationary without dropping anchor, thus not impacting marine life or the seabed.

An innovative hull design and advanced propulsion system meet or exceed the highest standards of energy efficiency, and exterior lighting can be dimmed so the ecosystem remains undisturbed. All suites feature a freshwater purification system, which significantly reduces plastic usage.

Silversea Expeditions are the first to be certified in environmental management in the Galápagos, diverting all but organic waste out of the islands to the mainland for proper recycling or processing. Before *Silver Origin* was even launched, we created the Silversea Fund for the Galápagos, dedicated to preserving the archipelago through educational projects. Thanks to this initiative, travellers can continue enjoying the unafraid heroes of these wonderful islands.



Bartolomé Island,  
Galápagos Islands

Pacific green turtle, seen  
while snorkelling in  
the Galápagos

Blue-footed Boobies,  
Galápagos Islands









# Your adventure begins on board

## *Synergy between destination and ship*

At the heart *Silver Origin* is the ship's hub of discovery, Basecamp. Similar in concept to a ski-in, ski-out facility at a luxury alpine resort, this elegant lounge is where your Galápagos adventure really comes to life.

It is here that you will meet for your daily excursions and prepare for your Zodiac launches from the Marina. Equipment from life vests to snorkelling gear is discreetly housed and the innovative space is designed as a place to socialise and share stories of the day's discoveries with fellow travellers. With guests coming and going throughout the day, the atmosphere at Basecamp always has an energised air of anticipation and excitement which is to be expected when exploring one of the most fascinating destinations on Earth.

Basecamp is also where you can interact with the onboard Expedition Team. These experienced individuals are chosen not only

for their professional expertise, but as well for their passionate desire to share their knowledge with you. With more expedition staff per guest than any ship in the region, you are assured of a personalised, small-group experience with intimate exposure to the rare wildlife, amazing landscapes and captivating history of the Galápagos.

The jewel in the crown Basecamp is the large, interactive digital wall with a freestanding touchscreen podium control through which you can access a wealth of information. The content is tailored according to your itinerary and features historical pictures provided by the Royal Geographical Society of London, videos with exclusive aerial and underwater shots, excursion previews and scientific presentations. Elsewhere, Basecamp's fascinating artworks and historical artefacts will enrich your understanding of the Galápagos Islands' history.

# Discover the land that time forgot

## *Discover the secrets of Darwin's living laboratory*

A Galápagos expedition with Silversea is unlike any other, on board a small ship that never touches land. Since Darwin's five-week visit in 1835, the archipelago's biological diversity has captivated the curiosity of travellers the world over. Join us to explore lava fields and saltwater lagoons, admire sea lions and boobies, and snorkel alongside Pacific green turtles. Two distinct seven-

day itineraries – one to the north, home to hundreds of Red-footed boobies and massive seabird colonies including Waved albatrosses; the other to the west spending two full days where penguins and flightless cormorants live – are easily combinable into one extraordinary 14-day expedition.

NOTE: Exact features and events change with each itinerary, please contact us for more information about your specific voyage.







### GET CLOSER TO THE GALÁPAGOS BY ZODIAC

*Silver Origin* has the highest Zodiac-to-guest ratio in the archipelago (1:12.5), meaning you will have even more opportunities to explore the islands. Accompanied by our expert naturalists, you can enjoy immersive Zodiac tours to discover the remarkable ecosystems of each island – both on the water and venturing ashore. Thanks to the Zodiacs' versatility, you are sure to get close to the action.



### DIVE INTO STRIKING SNORKELLING ADVENTURES

Delve into an underwater paradise, where vibrant coral reefs teem with diverse marine life. Encounter playful sea lions, graceful sea turtles, and a kaleidoscope of tropical fish as you explore this mesmerising wonderland. Uncover the secrets of one of the world's most captivating ecosystems and prepare to be enchanted by the allure of the Galápagos.



### TAKE A WALK ON THE WILD SIDE

Your most remarkable memories from the Galápagos Islands will likely come from a simple hike through these vibrant lands, which teem with endemic flora and fauna species. Look to the skies to see Blue- and Red-footed Boobies, Galápagos Hawks and Darwin's Finches; navigate new lava fields on Isabela Island; and ask your accompanying expert for information on Charles Darwin, who walked these lands before you.



### CAPTIVATE YOUR SENSES IN A KAYAK

With our naturalists on hand to point out interesting sights, you can take to the water to form an even closer bond with Mother Nature. Kayak around Darwin's Bay and admire Genovesa Island's craggy landscape. Keep your eyes on the water for signs of wildlife; they're sure to abound. Galápagos penguins, marine turtles and playful sea lions inhabit the islands' waters, as well as an abundance of tropical fish species.

# Expeditions with more expertise

*Personalised, destination-specific guidance at every step*

Each Silversea expedition comprises a unique team of naturalists and eco-science specialists whose talent in their respective fields is exceeded only by their passion for sharing their knowledge with you. With up to 10 qualified specialists and an expert filmmaker on each expedition – among the highest personnel-to-guest ratios in expedition cruising – they represent some

of the industry's most seasoned experts, from biologists, ornithologists and geologists to professionals in history, ecology and photography. Each is closely attuned to the cues of wildlife, ensuring your discovery of the Galápagos is intimately personal and extraordinarily revealing.

NOTE: The roster of expedition team members changes with each itinerary; please contact us for detailed information about your specific voyage.



Guests on a zodiac approaching the *Silver Origin*, Galapagos.





**PAUL ABAD**

**Kayak Leader / Naturalist Guide**

A one-time biologist, Paul is a Galápagos Naturalist Guide and a Birdwatching Guide. He has accompanied *Silver Origin* since 2021 and has observed/reported 90 of the Galápagos' 184 bird species.



**KARINA RAMON**

**Naturalist Guide**

An experienced scuba diver from the Galápagos, Karina is a passionate conservationist and has worked at the Charles Darwin Research Station and with the Giant Tortoise Migratory Ecology Programme.



**VICTOR RUEDA**

**Lecturer / Kayak Leader / Naturalist Guide**

Interest in evolutionary ecology, population genomics and biogeography led to an Ecosystem Engineering degree; Victor studied in the Ecuadorian Amazon and is a Galápagos National Park Naturalist Guide.



**LEANDRO VACA**

**Assistant Expedition Leader / Lecturer / Kayak Leader / Naturalist Guide**

Leandro holds a biology degree with specialisation in local fish. He has worked at the Galápagos Science Center and co-authored papers on sea turtle behaviour.



**ERNESTO VACA**

**Lecturer / Kayaking Leader / Naturalist Guide**

Biologist, author, park ranger, affiliate member of UPenn, and founder of the Institute of Community Science in San Cristobal, Ernesto is passionate about evolution, education and the Galápagos.



**NICOLAI BOLLING**

**Assistant Expedition Leader / Lecturer / Naturalist Guide**

Nicolai studied biology and attained a Master's in ecotoxicology. He lived in Malawi and travelled Africa extensively before falling in love (literally) in the Galápagos.

# Your most all-inclusive expedition experience

*Our Door-to-Door fares ensure a seamless journey*

With Silversea, your journey is curated down to the smallest detail for a seamless and effortless voyage, shore to shore and door to door. With almost one staff member for every guest, our service is unequalled, your every need anticipated and every wish fulfilled. Our Door-to-Door All-inclusive fare has it all, from international flights to transfers – including private executive

transfers from home to pre- and post-voyage hotel nights – to shore excursions in every port. Enjoy some of the most spacious and elegant accommodation at sea and an incredible selection of dining venues and beverages, all included as well.





*Pre & post voyage benefits* Private executive transfers (between home and airport)<sup>1</sup>.  
International roundtrip flights.  
Business Class upgrades at reduced rates<sup>2</sup>.  
In-country flights when required by itinerary<sup>3</sup>.  
Pre- and post-cruise hotel night/s depending on Silversea's air programme flight schedule.  
Transfers between hotel, airport and ship.  
Luggage handling.

*Activities & gear exclusive to EXPEDITIONS* Highly-qualified Expedition Team, comprising experts in their field.  
Guided Zodiac, land and sea tours, and shoreside activities.  
Enrichment lectures by our Expedition Team.  
Complimentary backpack and water bottle.

*Fine dining & beverages* Multiple open-seated restaurants, serving diverse cuisine and an in-suite 24-hour dining service.  
Beverages in-suite and throughout the ship, including selected wines, premium spirits, soft drinks, and more.

*Personalised service & amenities* Butler service in every suite category.  
Industry leading crew-to-guest ratio.  
Onboard gratuities.  
Unlimited Wi-Fi.

Door-to-door fare not available in some countries in Europe, Asia and Latin America. While Silversea strives to serve guests all listed items included as part of our Door-to-Door all-inclusive package, some items may be excluded in certain destinations or countries. Find detailed information on [www.silversea.com/terms-and-conditions](http://www.silversea.com/terms-and-conditions). | <sup>1</sup> Applicable for distances of up to 50 miles (80 km). For longer distances, special tariffs apply. | <sup>2</sup> Business Class upgrades are available in selected destinations.

# Our voyages









# Northern Galápagos



\*For EU and AU guests whose flights require an overnight stay

## Connect with rare wildlife

Sea lions. Lava lizards. The short-eared owl. Fearless as they are, the wildlife of the Galápagos captivates the senses. On this enriching itinerary, you'll swim with sea turtles in Fernandina, spot Galápagos penguins in Isabela, and explore the same diversity that Darwin

witnessed here almost 200 years ago. Española, at four million years old, is among the oldest islands and one of the only places on Earth to find the Waved Albatross, while Fernandina, one of the youngest, is revered for its snorkelling and birdwatching.



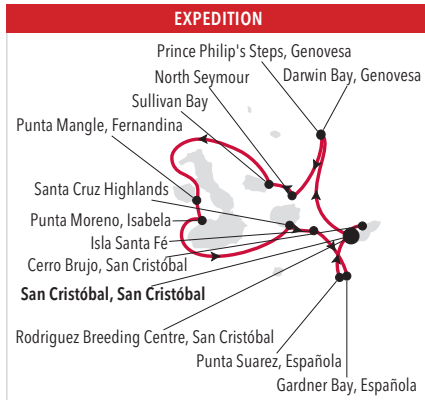
A land iguana in North Seymour, Galápagos



## SAN CRISTÓBAL TO SAN CRISTÓBAL

Duration 7 Days

### Silver Origin



**DAY BY DAY**

DAYS		ARRIVE	DEPART
1	SAN CRISTÓBAL, GALÁPAGOS	6:30	16:30
1	KICKER ROCK	17:15	18:30
2	PRINCE PHILIP'S STEPS, GENOVESA	5:30	
2	DARWIN BAY, GENOVESA		23:00
3	NORTH SEYMOUR	4:15	12:30
3	SULLIVAN BAY, SANTIAGO	14:30	18:00
4	BOLIVAR CANAL CRUISING		
4	PUNTA MANGLE, FERNANDINA	6:45	12:00
4	PUNTA MORENO, ISABELA	14:30	18:00
5	SANTA CRUZ HIGHLANDS	5:30	11:00
5	BREEDING CENTER, PTO AYORA, SANTA CRUZ	12:30	22:30
6	GARDNER BAY, ESPAÑOLA	3:30	13:00
6	PUNTA SUAREZ, ESPAÑOLA	13:45	23:30
7	SAN CRISTÓBAL, ISLA LOBOS	7:00	12:00
7	CERRO BRUJO, SAN CRISTÓBAL	14:30	22:00
8	SAN CRISTÓBAL, GALÁPAGOS	1:45	16:15



# Western Galápagos



\*For EU and AU guests whose flights require an overnight stay

## *Explore iconic islands*

Lava fields. Tidal pools. Pinnacle Rock. Explore the wild landscapes of the Galápagos and see what Darwin once saw: creatures unafraid of predators and open to human interaction. This expedition includes two full days in Fernandina and Isabella Island – at a mere one million years old the

youngest (and largest) in the archipelago and home to some of the region's best snorkelling – and exploration of Floreana, rich in human history where you can leave an unstamped message in its famous wooden barrel at Post Office Bay.



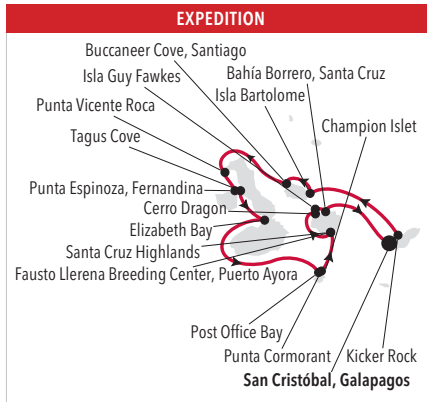
Guests kayaking in Bahía Gardner, Española Island, Galápagos



## SAN CRISTÓBAL TO SAN CRISTÓBAL

Duration 7 Days

### Silver Origin



**DAY BY DAY**

DAYS		ARRIVE	DEPART
1	SAN CRISTÓBAL, GALÁPAGOS	1:45	16:15
1	KICKER ROCK	17:15	18:30
2	ISLA BARTOLOMÉ	1:15	12:00
2	BUCCANEER COVE, SANTIAGO	14:30	22:30
3	PUNTA VICENTE ROCA, ISABELA	6:30	12:30
3	BOLIVAR CANAL CRUISING		
3	PUNTA ESPINOZA, FERNANDINA	14:30	4:30
4	TAGUS COVE, ISABELA	5:00	11:30
4	ELIZABETH BAY, ISABELA	15:00	19:00
5	POST OFFICE BAY, FLOREANA	6:30	10:15
5	CHAMPION ISLET, FLOREANA	13:00	15:00
5	PUNTA CORMORANT, FLOREANA	15:20	22:00
6	SANTA CRUZ HIGHLANDS	5:00	
6	BREEDING CENTER, PTO AYORA, SANTA CRUZ		22:00
7	CERRO DRAGÓN, SANTA CRUZ	6:30	12:30
7	GUY FAWKES	13:00	14:30
7	BAHIA BOWDITCH, SANTA CRUZ	15:20	5:00
8	SAN CRISTÓBAL, GALÁPAGOS	6:30	16:30



<sup>1</sup> Departure dates and duration refer to the first day of travel

<sup>2</sup> Included for Door-to-Door fares

# Your intrepid journey awaits



*Silver Origin in the Galápagos*



## NORTHERN GALÁPAGOS

### SAN CRISTÓBAL ROUNDTRIP

Duration **7** Days

SHIP	DEPT. DATE	SHIP	DEPT. DATE	SHIP	DEPT. DATE
SILVER ORIGIN	04 Jan 25	SILVER ORIGIN	14 Jun 25	SILVER ORIGIN	20 Dec 25
SILVER ORIGIN	18 Jan 25	SILVER ORIGIN	21 Jun 25	SILVER ORIGIN	03 Jan 26
SILVER ORIGIN	01 Feb 25	SILVER ORIGIN	05 Jul 25	SILVER ORIGIN	17 Jan 26
SILVER ORIGIN	15 Feb 25	SILVER ORIGIN	19 Jul 25	SILVER ORIGIN	31 Jan 26
SILVER ORIGIN	01 Mar 25	SILVER ORIGIN	02 Aug 25	SILVER ORIGIN	14 Feb 26
SILVER ORIGIN	15 Mar 25	SILVER ORIGIN	13 Sep 25	SILVER ORIGIN	28 Feb 26
SILVER ORIGIN	29 Mar 25	SILVER ORIGIN	11 Oct 25	SILVER ORIGIN	14 Mar 26
SILVER ORIGIN	12 Apr 25	SILVER ORIGIN	25 Oct 25	SILVER ORIGIN	28 Mar 26
SILVER ORIGIN	26 Apr 25	SILVER ORIGIN	08 Nov 25		
SILVER ORIGIN	10 May 25	SILVER ORIGIN	06 Dec 25		

## WESTERN GALÁPAGOS

### SAN CRISTÓBAL ROUNDTRIP

Duration **7** Days

SHIP	DEPT. DATE	SHIP	DEPT. DATE	SHIP	DEPT. DATE
SILVER ORIGIN	11 Jan 25	SILVER ORIGIN	28 Jun 25	SILVER ORIGIN	13 Dec 25
SILVER ORIGIN	25 Jan 25	SILVER ORIGIN	12 Jul 25	SILVER ORIGIN	27 Dec 25
SILVER ORIGIN	08 Feb 25	SILVER ORIGIN	26 Jul 25	SILVER ORIGIN	10 Jan 26
SILVER ORIGIN	22 Feb 25	SILVER ORIGIN	09 Aug 25	SILVER ORIGIN	24 Jan 26
SILVER ORIGIN	8 Mar 25	SILVER ORIGIN	20 Sep 25	SILVER ORIGIN	07 Feb 26
SILVER ORIGIN	22 Mar 25	SILVER ORIGIN	04 Oct 25	SILVER ORIGIN	21 Feb 26
SILVER ORIGIN	05 Apr 25	SILVER ORIGIN	18 Oct 25	SILVER ORIGIN	21 Mar 26
SILVER ORIGIN	19 Apr 25	SILVER ORIGIN	01 Nov 25		
SILVER ORIGIN	03 May 25	SILVER ORIGIN	15 Nov 25		
SILVER ORIGIN	17 May 25	SILVER ORIGIN	29 Nov 25		

# The most elegant ship to sail the Galápagos

## *Silver Origin: Designed for discovery and delight*

There is only one way to be truly immersed in the intimate beauty of the Galápagos, and that is by ship; *Silver Origin* is the height of luxurious, experiential travel in this remote archipelago. Never before have these islands been so superbly represented: a team of Ecuadorian national expert guides, eight Zodiacs, the highest crew-to-guest service ratio, and hybrid spaces with floor-to-ceiling windows ensuring a seamless connection to the islands from all vantage points.

*Silver Origin* welcomes just 100 guests in 50 spacious suites, each with a private veranda or Horizon Balcony affording

stunning views, and all including the professional services of a dedicated butler. The culinary experience is equally as enriching with Ecuadorian-inspired cuisine accompanied by the best regional wines served alongside our renowned international fare.

Purpose-built for the Galápagos, the environmentally-conscious *Silver Origin* is outfitted with dynamic positioning technology to keep the ship stationary without impacting the seabed, an advanced wastewater treatment system, and a freshwater purification system in every suite.





# Silver Origin

## SHIP SPECIFICATIONS

Crew	90
Officers	Ecuadorian
Guests	100
Tonnage	5,800
Length	331.4 Feet/101 Mt
Width	52.5 Feet/16 Mt
Speed	14 Knots
Built	2020



## DECK 08

Stargazing

## DECK 07

The Grill  
Observation Lounge  
Open Deck

## DECK 06

Beauty Spa  
Fitness Centre

## DECK 04

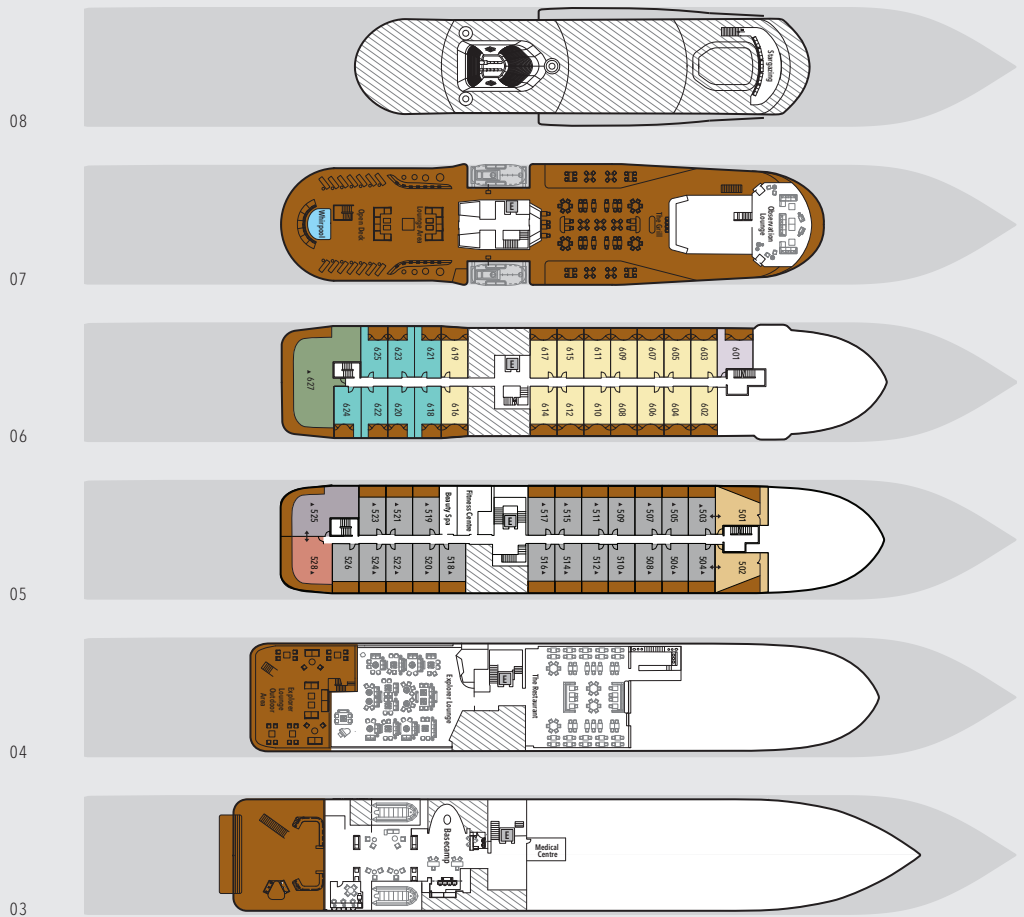
The Restaurant  
Explorer Lounge

## DECK 03

Medical Centre  
Basecamp  
Marina

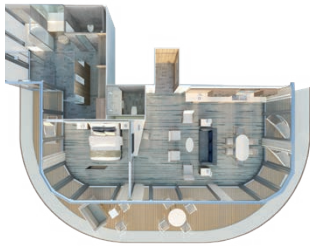
## SUITE CATEGORIES

Owner's Suite  
Grand Suite  
Royal Suite  
Silver Suite  
Medallion Suite  
Deluxe Veranda Suite  
Superior Veranda Suite  
Classic Veranda Suite



Deck plans are for illustration purposes only and may be subject to change.





## OWNER'S SUITE

1,722 SQ. FT. / 160 M<sup>2</sup>  
INCLUDING VERANDA (646 SQ. FT. / 60 M<sup>2</sup>)

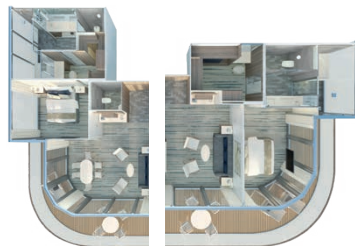
- Large veranda with patio furniture and floor-to-ceiling glass doors
- Living room with sitting area
- Separate dining area
- Twin beds or king-sized bed
- A choice of pillows
- Bathroom with double vanity, plus a powder room
- Ocean-view whirlpool bath and separate shower
- Walk-in wardrobe(s) with personal safe
- Vanity table(s)
- Writing desk(s)
- 2 large flat-screen TVs
- Premium sound system
- Premium coffee station
- Binoculars
- Laundry service\*
- Unlimited Premium Wi-Fi



## DELUXE VERANDA SUITE

335 SQ. FT. / 31 M<sup>2</sup>  
INCLUDING HORIZON BALCONY (62 SQ. FT. / 6 M<sup>2</sup>)

- Private veranda with Horizon Balcony
- Sitting area
- Twin beds or queen-sized bed
- A choice of pillows
- Bathroom with large vanity
- Ocean-view walk-in shower
- Walk-in wardrobe(s) with personal safe
- Writing desk
- 1 large flat-screen TV
- Unlimited Standard Wi-Fi



Grand Suite      Royal Suite

## GRAND SUITE / ROYAL SUITE

Suites 525 and 528 are connected through a shared foyer

**GRAND SUITE:** 1,025 SQ. FT. / 95 M<sup>2</sup>  
INCLUDING VERANDA (271 SQ. FT. / 25 M<sup>2</sup>)  
**ROYAL SUITE:** 897 SQ. FT. / 83 M<sup>2</sup>  
INCLUDING VERANDA (305 SQ. FT. / 28 M<sup>2</sup>)

- Large veranda with patio furniture and floor-to-ceiling glass doors
- Living room with sitting area
- Separate dining area (only for Grand Suite)
- Twin beds or king-sized bed
- A choice of pillows
- Bathroom with double vanity, plus a powder room
- Ocean-view whirlpool bath and separate shower
- Walk-in wardrobe(s) with personal safe
- Vanity table(s)
- 2 large flat-screen TVs
- Premium sound system
- Premium coffee station
- Binoculars
- Laundry service\*
- Unlimited Premium Wi-Fi



## SUPERIOR VERANDA SUITE

325 SQ. FT. / 30 M<sup>2</sup>  
INCLUDING HORIZON BALCONY (72 SQ. FT. / 7 M<sup>2</sup>)

- Private veranda with Horizon Balcony
- Sitting area
- Twin beds or queen-sized bed
- A choice of pillows
- Bathroom with large vanity and walk-in shower
- Walk-in wardrobe(s) with personal safe
- Writing desk
- 1 large flat-screen TV
- Unlimited Standard Wi-Fi



## SILVER SUITE

536 SQ. FT. / 50 M<sup>2</sup>  
INCLUDING VERANDA (109 SQ. FT. / 10 M<sup>2</sup>)

- Large veranda with patio furniture and floor-to-ceiling glass doors
- Living room with sitting area
- Twin beds or queen-sized bed
- A choice of pillows
- Bathroom with large vanity
- Whirlpool bath and separate shower with exterior view
- Walk-in wardrobe(s) with personal safe
- Vanity table(s)
- 2 large flat-screen TVs
- Premium sound system
- Premium coffee station
- Binoculars
- Laundry service\*
- Unlimited Premium Wi-Fi



## CLASSIC VERANDA SUITE

325 SQ. FT. / 30 M<sup>2</sup>  
INCLUDING VERANDA (72 SQ. FT. / 7 M<sup>2</sup>)

- Floor-to-ceiling sliding doors with veranda
- Sitting area
- Twin beds or queen-sized bed
- A choice of pillows
- Bathroom with large vanity and walk-in shower
- Walk-in wardrobe(s) with personal safe
- Writing desk
- 1 large flat-screen TV
- Unlimited Standard Wi-Fi



## MEDALLION SUITE

355 SQ. FT. / 33 M<sup>2</sup>  
INCLUDING HORIZON BALCONY (88 SQ. FT. / 8 M<sup>2</sup>)

- Private veranda with Horizon Balcony
- Sitting area
- Twin beds or king-sized bed
- A choice of pillows
- Bathroom with large vanity
- Ocean-view walk-in shower
- Fitted wardrobe with personal safe
- Writing desk
- 1 large flat-screen TV
- Premium sound system
- Premium coffee station
- Binoculars
- Laundry service\*
- Unlimited Premium Wi-Fi

## AMENITIES & FEATURES FOR ALL SUITES

- Butler service
- Private veranda
- Mini bar with local snacks and a range of soft and alcoholic drinks
- In-suite fresh water purification system and refill stations
- A choice of pillows
- Eco-friendly bath amenities
- Plush robes and slippers
- Hair dryer
- Flat-screen television(s) with Interactive Media Library
- 110/220 volt and USB outlets
- Direct-dial telephone(s)
- 24-hour room service and in-suite dining
- Complimentary Wi-Fi for all suites
- Complimentary expedition gear (waterproof backpack, raincoat and premium metallic water bottle)

\*Complimentary laundry service will be limited to three pieces per guest per day.

Suite diagrams shown are for illustration purposes only and may vary from actual square footage. Please refer to suite specifications for square footage.







FOR FURTHER DETAILS ON AVAILABILITY AND FARES PLEASE VISIT [SILVERSEA.COM](http://SILVERSEA.COM)  
OR CONTACT YOUR TRAVEL ADVISOR.

BR2404227864